

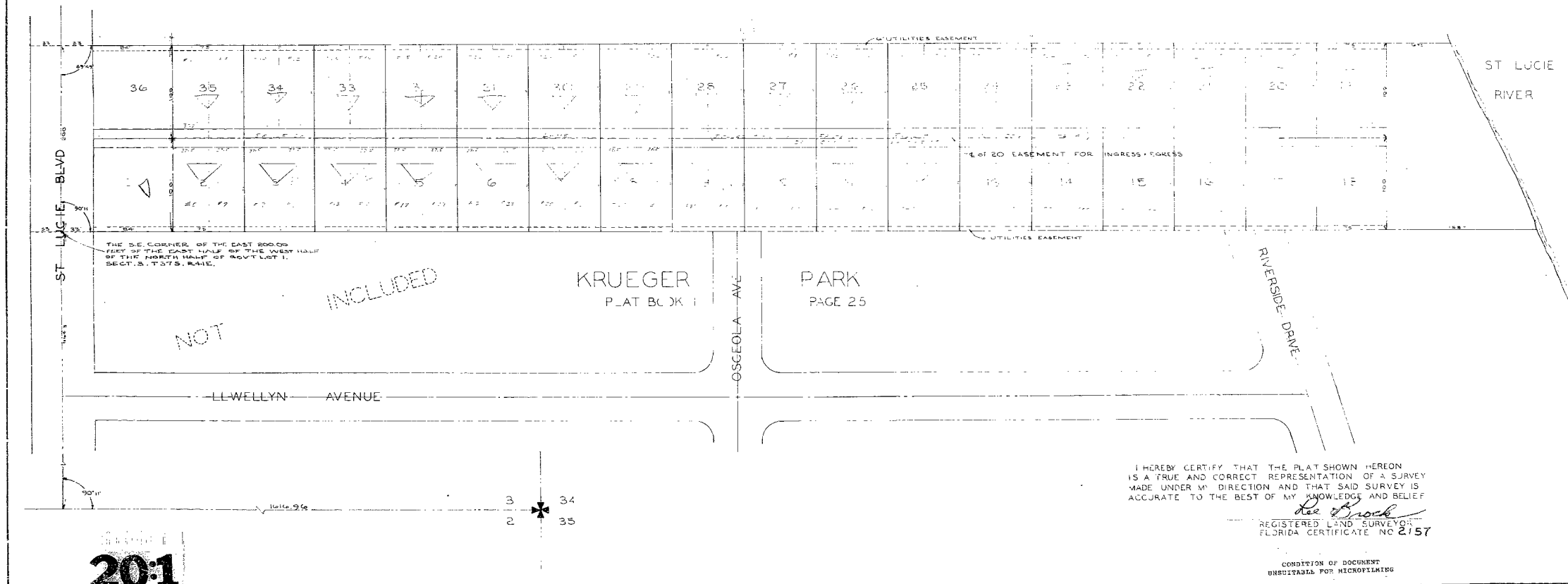
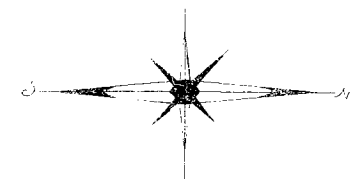
VICINITY MAP

FISHERMAN'S PARADISE

A SUBDIVISION OF THE EAST 200 FEET OF THE EAST HALF OF THE WEST HALF OF THE NORTH 1/2 OF GOV'T LOT 1, SECTION 3, TWP 38 S., R6E 41E, ALL IN

MARTIN COUNTY, FLORIDA

SCALE: 1" = 50'



20:1